

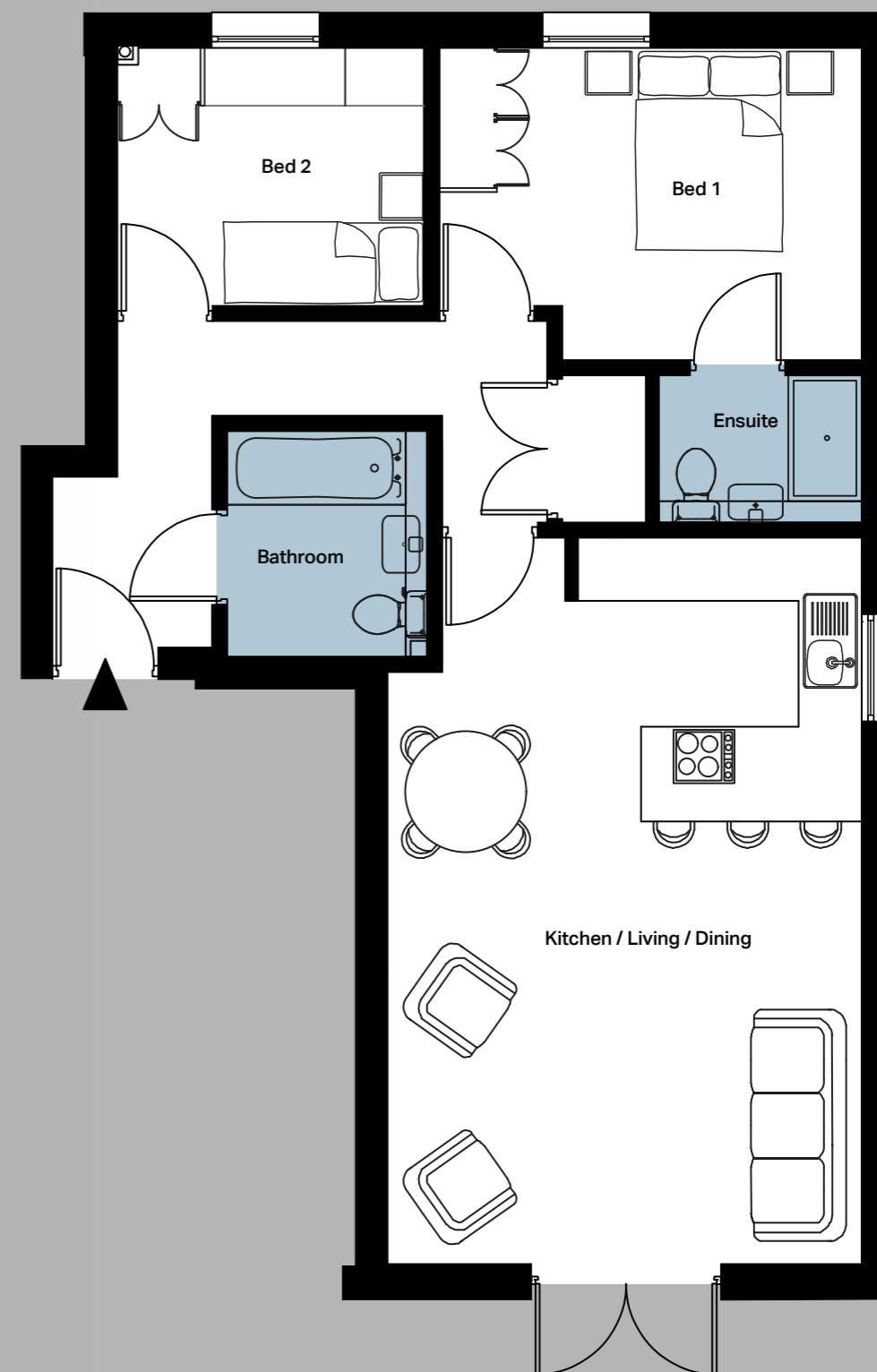
# 01

## Ground Floor

2 Bedrooms | 2 Bathrooms | Garden (15m<sup>2</sup>)

743 ft<sup>2</sup> | 69m<sup>2</sup>

	m	ft
Kitchen Living Dining	4.5 x 6.9	14.8 x 22.6
Bed 1	3.0 x 4.0	9.7 x 13.1
Bed 2	2.5 x 2.9	8.2 x 9.5
Bathroom	1.9 x 2.2	6.2 x 7.2
Ensuite	1.4 x 1.9	4.6 x 6.2



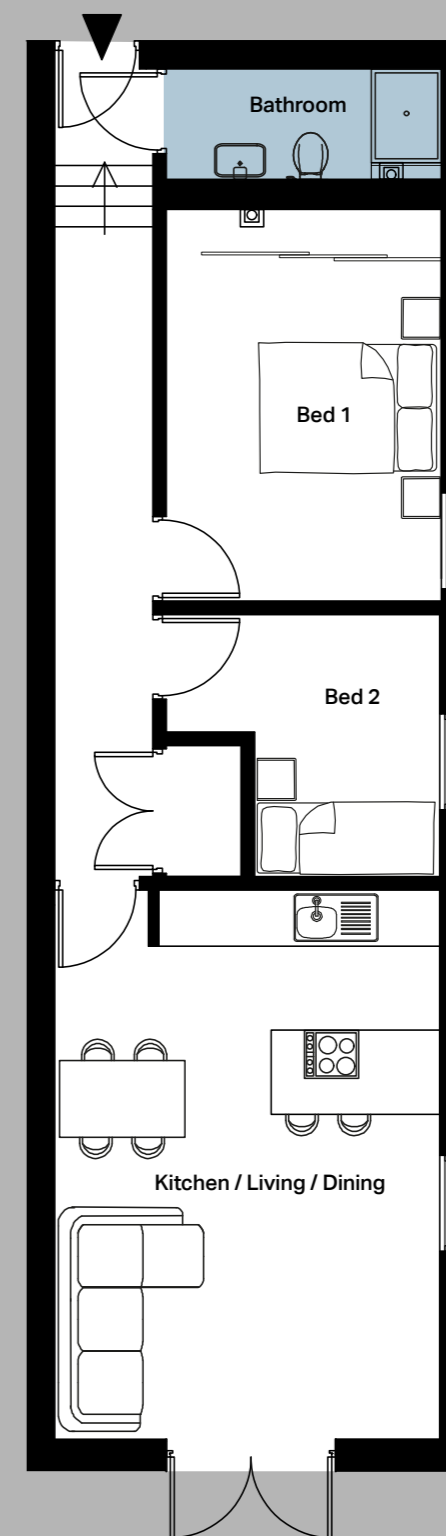
# 02

## Ground Floor

2 Bedrooms | 1 Bathroom | Garden (14m<sup>2</sup>)

657 ft<sup>2</sup> | 61m<sup>2</sup>

	m	ft
Kitchen Living Dining	4.1 x 5.9	13.5 x 19.4
Bed 1	2.9 x 4.2	9.5 x 13.8
Bed 2	2.7 x 2.9	8.9 x 9.5
Bathroom	1.2 x 2.9	3.9 x 9.5



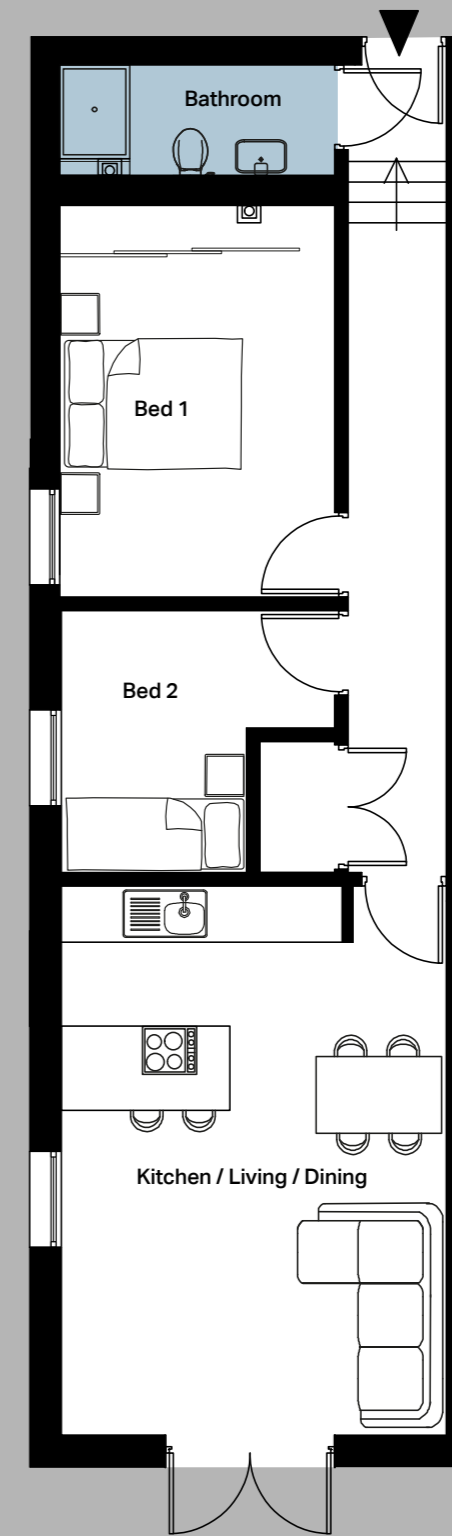
# 03

## Ground Floor

2 Bedrooms | 1 Bathroom | Garden (14m<sup>2</sup>)

657 ft<sup>2</sup> | 61m<sup>2</sup>

	m	ft
Kitchen Living Dining	4.1 x 5.9	13.5 x 19.4
Bed 1	2.9 x 4.2	9.5 x 13.8
Bed 2	2.8 x 2.9	9.2 x 9.5
Bathroom	1.2 x 2.9	3.9 x 9.5



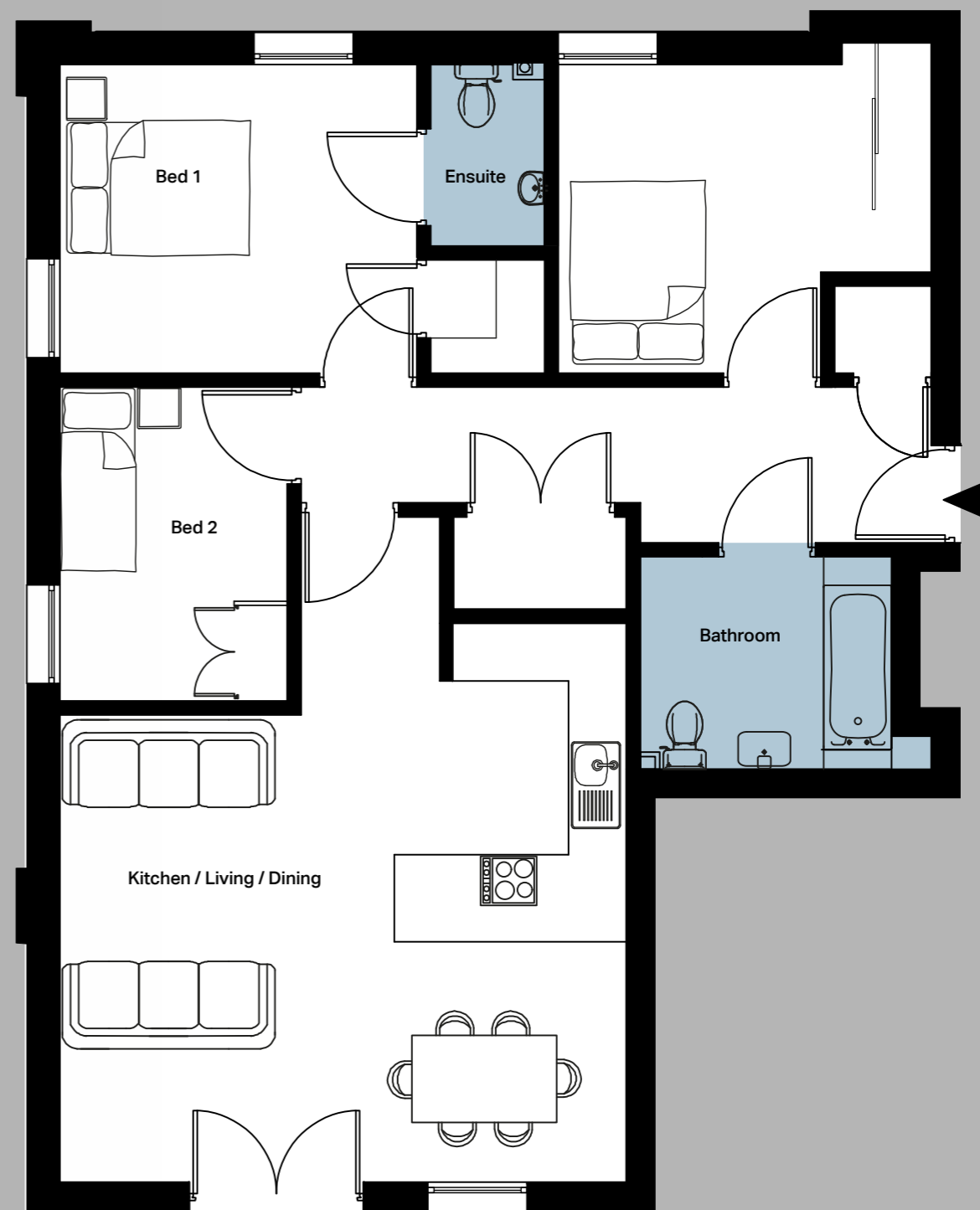
# 04

## Ground Floor

3 Bedrooms | 2 Bathrooms | Garden (14m<sup>2</sup>)

980 ft<sup>2</sup> | 91m<sup>2</sup>

	m	ft
Kitchen Living Dining	5.9 x 6.9	19.4 x 22.6
Bed 1	3.2 x 3.7	10.5 x 12.1
Bed 2	3.2 x 3.9	10.5 x 12.8
Bed 3	2.4 x 3.3	7.9 x 10.8
Bathroom	2.2 x 2.6	7.2 x 8.5
Ensuite	1.2 x 1.9	3.9 x 6.2



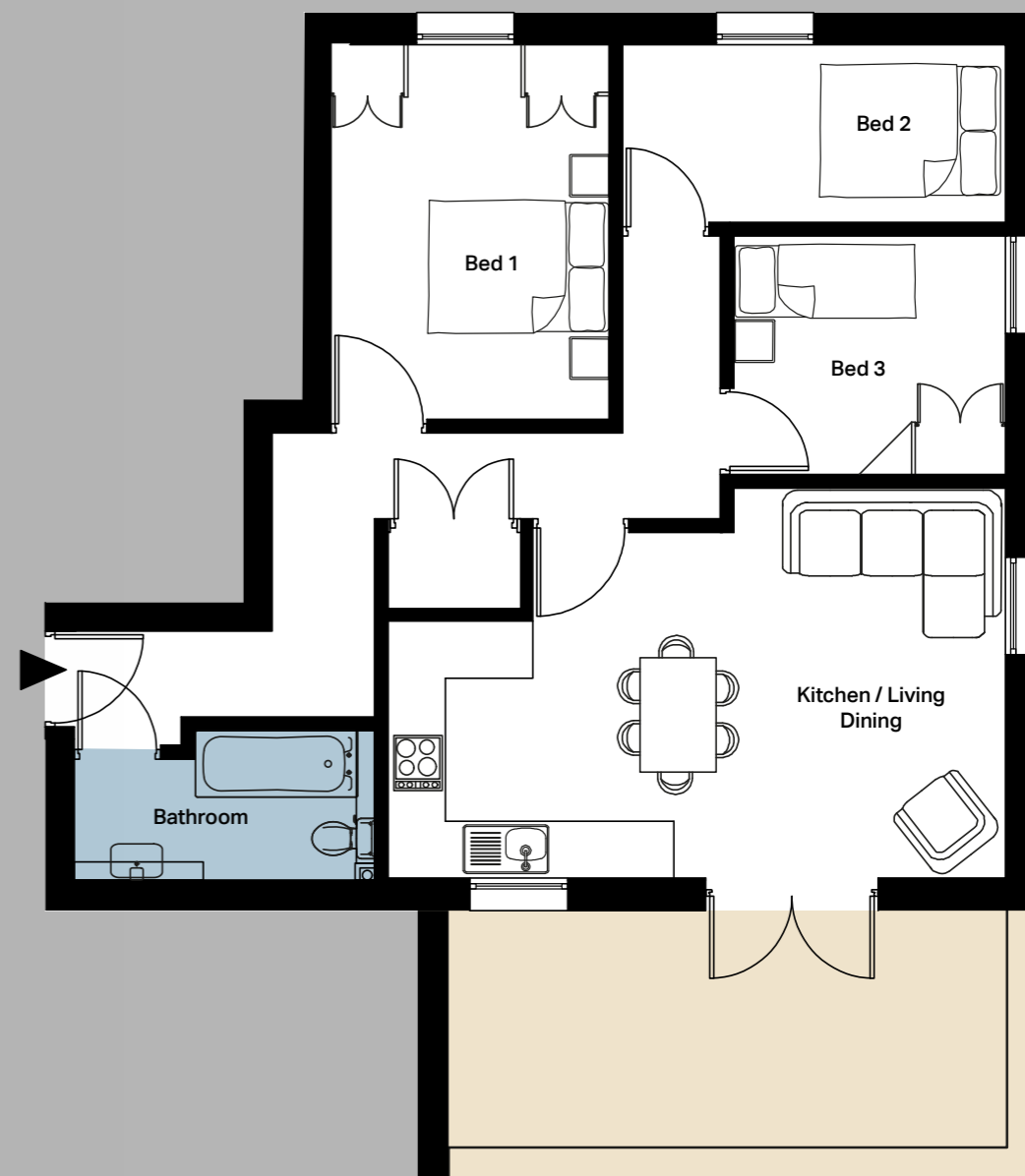
# 05

## First Floor

3 Bedrooms | 1 Bathroom | Terrace (15m<sup>2</sup>)

764 ft<sup>2</sup> | 71m<sup>2</sup>

	m	ft
Kitchen Living Dining	4.1 x 6.5	13.5 x 21.3
Bed 1	2.9 x 3.9	9.5 x 12.8
Bed 2	1.9 x 4.0	6.2 x 13.1
Bed 3	2.5 x 2.8	8.2 x 9.2
Bathroom	1.6 x 3.2	5.2 x 10.5



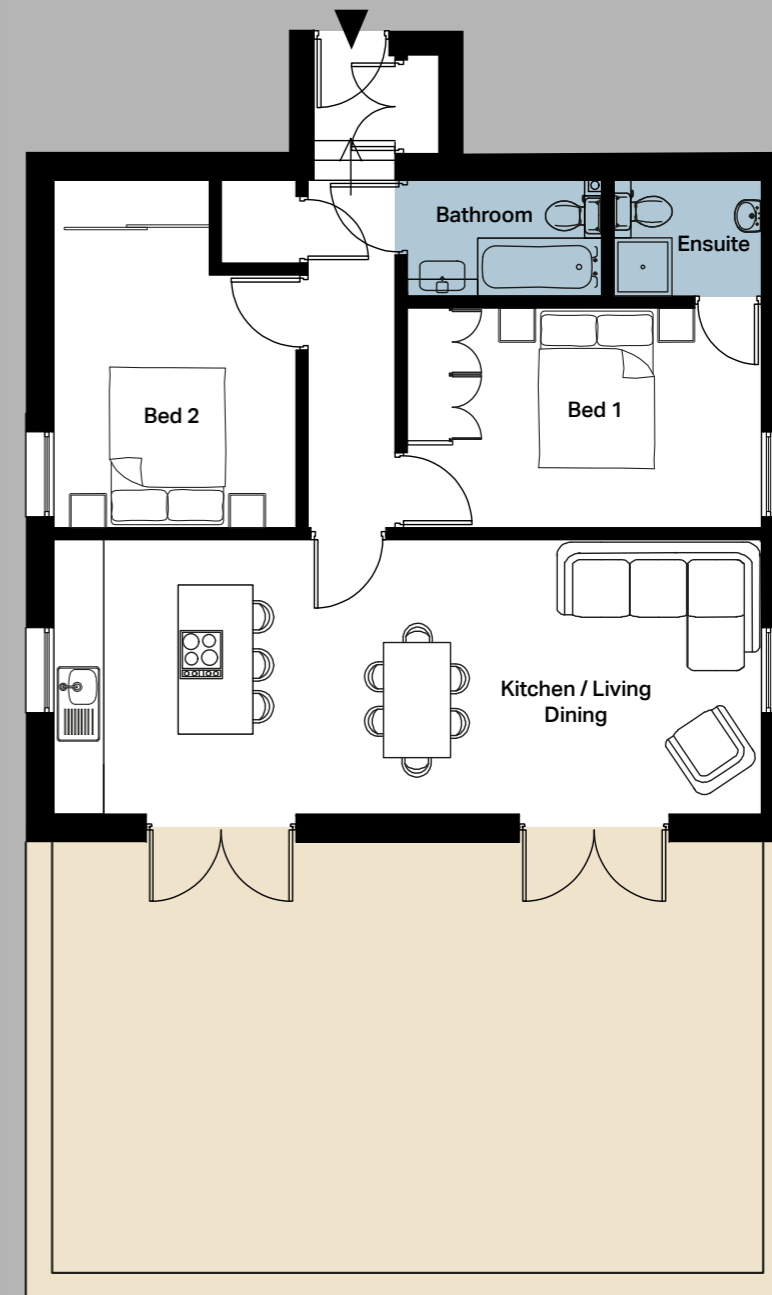
# 06

## First Floor

2 Bedrooms | 2 Bathrooms | Terrace (45m<sup>2</sup>)

737 ft<sup>2</sup> | 68m<sup>2</sup>

	m	ft
Kitchen Living Dining	3.3 x 8.5	10.8 x 27.9
Bed 1	2.7 x 4.3	8.9 x 14.1
Bed 2	2.9 x 4.2	9.5 x 13.8
Bathroom	1.4 x 2.3	4.6 x 7.5
Ensuite	1.4 x 1.8	4.6 x 5.9



# 07

## First Floor

3 Bedrooms | 2 Bathrooms | Terrace (15m<sup>2</sup>)

904 ft<sup>2</sup> | 84m<sup>2</sup>

	m	ft
Kitchen Living Dining	4.1 x 9.0	13.5 x 29.5
Bed 1	3.2 x 3.7	10.5 x 12.1
Bed 2	3.4 x 3.4	11.2 x 11.2
Bed 3	2.3 x 3.2	7.5 x 10.5
Bathroom	1.9 x 2.4	6.2 x 7.9
Ensuite	1.0 x 2.2	3.3 x 7.2



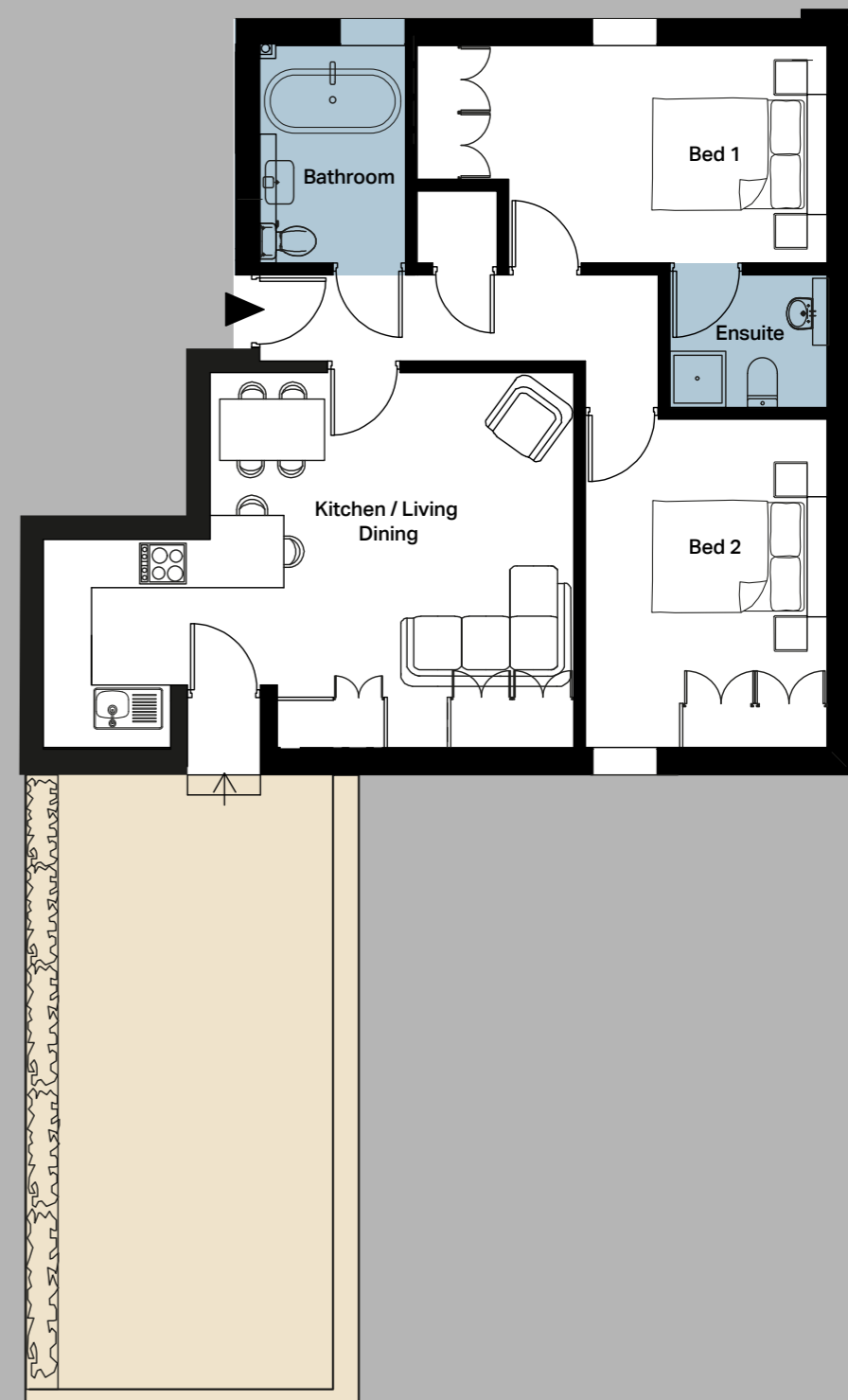
# 08

## Second Floor

2 Bedrooms | 2 Bathrooms | Terrace (27m<sup>2</sup>)

753 ft<sup>2</sup> | 70m<sup>2</sup>

	m	ft
Kitchen Living Dining	4.7 x 6.6	15.4 x 21.7
Bed 1	2.7 x 5.1	8.9 x 16.7
Bed 2	3.0 x 4.1	9.8 x 13.5
Bathroom	1.8 x 2.7	5.9 x 8.9
Ensuite	1.7 x 2.0	5.6 x 6.6





# 09

## Second Floor

3 Bedrooms | 2 Bathrooms | Terrace (36.5m<sup>2</sup>)

963 ft<sup>2</sup> | 89m<sup>2</sup>

	m		ft	
<b>Kitchen Living Dining</b>	4.6	x 7.7	15.1	x 25.3
<b>Bed 1</b>	2.9	x 4.9	9.5	x 16.1
<b>Bed 2</b>	3.0	x 4.0	9.8	x 13.1
<b>Bed 3</b>	3.1	x 3.4	10.2	x 11.2
<b>Bathroom</b>	2.3	x 2.9	7.5	x 9.5
<b>Ensuite</b>	1.6	x 2.0	5.2	x 6.6

